



Teleplan Hellfire Combat Management System

THE CHALLENGE: Using the Hellfire Weapon Systems in highly mobile, Navy and Army surface operations with coordination of distributed Hellfire Combat Units, supporting fire-on-the-move and simultaneous cross-firing for maximum effect.

OUR SOLUTION: Teleplan Hellfire Combat Management System (TPCMS) integrates launchers, designators, trackers, radars, navigation equipment, communication equipment and a Geographical Information System to provide Hellfire launch capabilities to single or co-ordinated surface Hellfire Combat Units. The system provides Target acquisition and identification, Target assignment, Target tracking, Launcher stabilization, and Firing Coordination capabilities. TPCMS may be connected to a NATO or National C4IS for exchange of updated situation picture and target assignments, to include target data and latest intelligence information.



Background

The Norwegian Coastal Ranger Commando developed in 2003-2004 a Hellfire Missile Boat Demonstrator. A 15 meter combat boat was equipped with a stabilized dual-rail Hellfire launcher, a laser designator and Teleplan's Hellfire Combat Management System (TPCMS). The Norwegian Coastal Rangers successfully demonstrated engaging targets at 25 knots at sea state 3, with full coordination of land and seabased Hellfire Combat Units.

Teleplan's Hellfire Combat Management System integrates the launcher, the designator, the ship navigation system, and HF radios to create an effective weapon system enabling distributed Combat Units to engage multiple targets. TPCMS includes Teleplan's world-class Geographical Information System MARIA™.

Teleplan's MARIA™ has been acclaimed by military and civilian users for almost a decade. The focus on performance and the ability to meet a wide range of functional requirements has resulted in a very popular product with a user community that is constantly expanding.

Typical TPCMS users:

- Coastal Rangers
- Special Operation Forces
- Border Control Forces
- Other Naval Forces
- Other Army Forces

Functionality:

- Target acquisition and identification
- Target assignment
- Target tracking
- Launcher stabilization
- Create and distribute fire messages to other Combat Units
- Cross designation and cross firing support.
- Time-on-target coordination with other Combat Units
- Distribution of common situation picture
- Distribution of map overlays
- Display of vector and raster maps and aerial imagery
- Terrain profile analysis
- Integration of tracking radars
- Connection to a C4IS
- Can be extended to integrate guns

Communication alternatives includes:

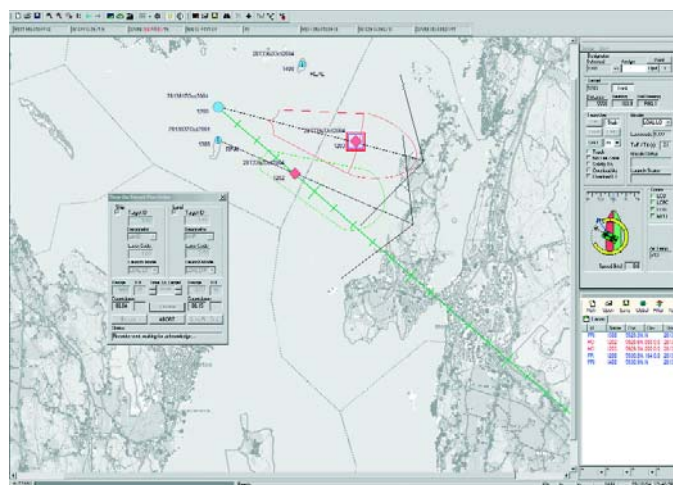
GSM: Secure distribution of situation picture via a NATO accredited GSM phone.

TACTICAL RADIO: Secure distribution of a situation picture and fire control messages via VHF, UHF or HF radios. Incl. an option with IDM technology® to communicate with platforms carrying IDM.

LINK Systems: Distribution of situation picture through various Link Systems, including LINK 1, Link 11, Link 14, Link 16 and OTH Gold.
C4IS: TPCMS may be connected to a NATO or National C4IS.

Map formats:

MARIA™ supports a large number of commonly used map formats, including raster, vector, satellite and aerial imagery.



Hardware requirements:

TPCMS is available on Intel compatible desktop or laptop computers running the Windows 2000 or Windows XP operating systems.

WHY TELEPLAN?

Teleplan has a unique combination of experience:

- More than 40 years of experience delivering solutions to armed forces worldwide.
- Highly skilled staff with experience in both military operations and in state-of-the-art software development.
- Efficient organization dedicated to Military Command and Control, Electronic Warfare, Training Simulators and Communications Planning.
- Services include requirements analyses, system integration, rapid software development and deployment, and lifecycle support.
- Proven solutions in daily use.

