



maria™ Warship AIS modules

- AIS presentation module
- AIS spoofing module

MARIA™ Warship AIS consists of modules for presenting AIS information on electronic maps and for spoofing own position on present AIS networks.

MARIA™ is a high performance mapping application used to collect, present and filter position dependent information, providing decision support to numerous planning and analysis activities. **MARIA™** is used as a platform for several client specific solutions delivered by Teleplan Globe.

AIS presentation module

The MARIA™ AIS presentation module receives AIS data either on a com port or on a network port and presents the AIS picture on an electronic map.

The MARIA™ AIS module can be used together with the MARIA™ Radar and GPS module. As a result, the ships navigation radar and AIS pictures can be presented on the same map. A track correlator module is available as well, which makes it possible to correlate the radar and AIS picture.

MARIA™ has an enhanced programming interface (API) which enables integration with other sources. The API can also be used to export correlated pictures to other systems.

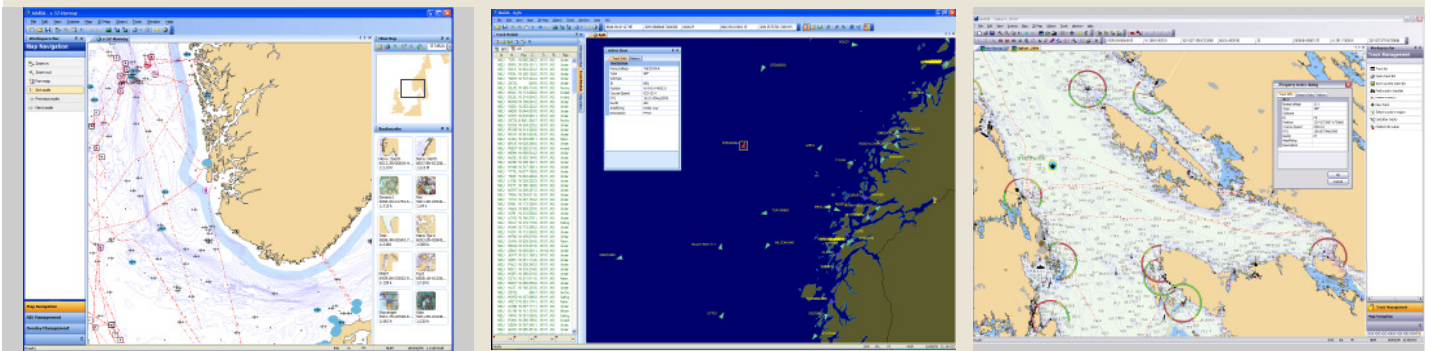
AIS spoofing module

The purpose of this module is to distort the ship's real position on the AIS network.

The MARIA™ AIS spoofing module produces fake GPS and gyro signals to the on board AIS unit.

One can choose between three different modes of operation:

- **OFFSET**
The GPS position is given an offset before it is sent to the AIS unit (fixed or varying offset)
- **DELAYED**
A position from the position history log and the current time, is sent to the AIS unit.
- **PRE-PLANNED ROUTE**
Interpolated positions from a pre-planned route is sent to the AIS unit



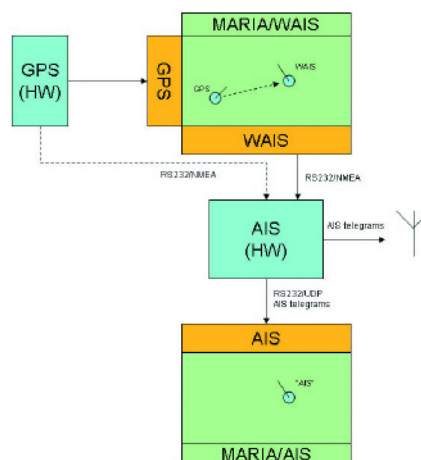
Unit & Track Management

MARIA™ provides tools to present and manage mobile tracks. Tracks are presented in real-time utilizing user specified or standard symbols. The animation is smooth, as the maximum animation-rate is 10-20 updates each second of more than 1000 units simultaneously. MARIA™ has multiple track-lists, which enable input from many sources to be displayed and monitored simultaneously. All track information may be stored to file for later replay or de-briefing.

Setup and Installation

MARIA™ with the AIS modules is typically installed on a regular PC running Windows 2000/XP. GPS, Gyro and AIS are connected through standard RS232 or RS422 ports.

The software and hardware setup is simple and require no expertise to be installed.



Typical AIS setup >>>

WHY TELEPLAN GLOBE?

Teleplan has a unique combination of experience:

- **40 years of experience delivering solutions to armed forces worldwide.**
 - **Highly skilled staff with experience in both military operations and in state-of-the-art software development.**
 - **Efficient organization dedicated to Military Command and Control, Electronic Warfare, Training Simulators and Communications Planning activities.**
- Proven solutions in daily operational use.**